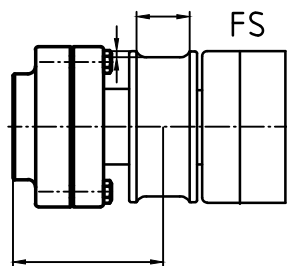
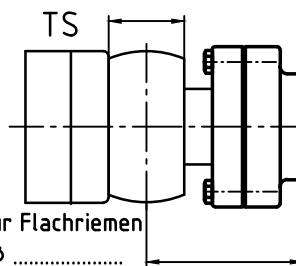


Type	WB	AB	GL	DB	C	C <sub>min</sub>	D	d	B	E	F	G	H	J
WG 70						105	70	25	M20	106	80	70	67	8.5
WG 75					75		25							
WG 85					85		30							
WG 90					90		35							
WG 95					95		40							
WG 110					110		50							
WG 115					115	50	M30 x1,5	150	114	95	88	12.5		
WG 130					130	60								
WG 150					150	75								
WG 170					150	85								

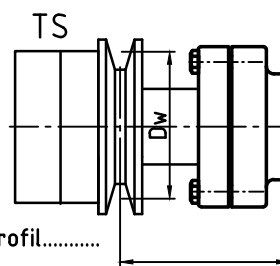
Gummierung.....  
 .....  
 Geschwindigkeit V= ..... m/min  
 Temperatur T= ..... °C



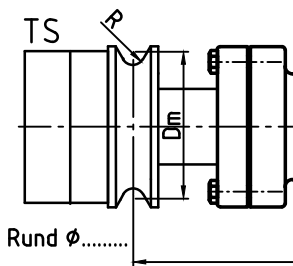
frei laufende  
Seilscheibe



ballig für Flachriemen  
Außen φ .....



Profil.....  
Dw=.....



Profil Rund φ.....  
Dm=.....

Breitstreckwalze  
mit Gummimantel  
"Trockenbetrieb"

Zeich.Nr.  
01/001

Angebot./Kom.Nr.



Westring 29  
D-33818 Leopoldshöhe  
Tel.05202-98280  
Fax05202-982828  
www.kickert.de