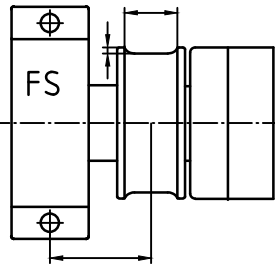
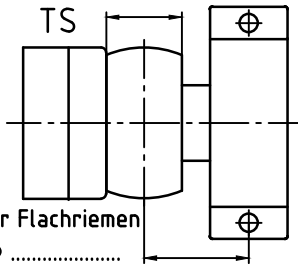


Type	WB	AB	LM	DB	C	C <sub>min</sub>	D	d	a	b	c'	e	f	g	h	k	l	m	o	r	s	SW	Z
WG 70/75						55		25	130	160	15	50	80	41	111	115	100	40	100	102	11	12	16
WG 85						75	85	30	150	180	20	64	140	62	154	141	120	55	129	120	14	17	20
WG 90					90		35																
WG 95					95		40																
WG 110					110		50																
WG 115					115		50																
WG 130					90	130	60	200	240	28	85	200	82	207	173	160	80	173	150	22	22	20	
WG 150						150	75																
WG 170						170	85																
WG 190					115	190	95	250	300	35	100	200	92	232	202	200	80	200	180	27	22	25	
WG 230						230	115																
WG 260					160	260	135	330	400	45	128	250	117	300	252	258	110	257	229	28	22	30	
WG 275						275	170																

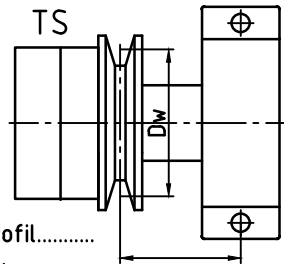
Gummierung .....  
 Geschwindigkeit V= ..... m/min .....  
 Temperatur T= .....



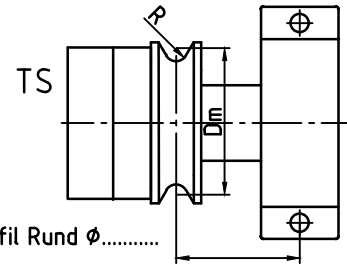
frei laufende Seilscheibe



ballig für Flachriemen  
 Außen ø .....



Profil.....  
 Dw=.....

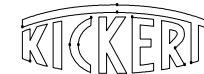


Profil Rund ø.....  
 Dm=.....

Breitstreckwalze  
 mit Gummimantel  
 "Trockeneinsatz"

Zeich.Nr.  
**011/001**

Angebot./Kom.Nr.



Westring 29  
 D-33818 Leopoldshöhe  
 Tel.05202-98280  
 Fax05202-982828  
 www.kickert.de