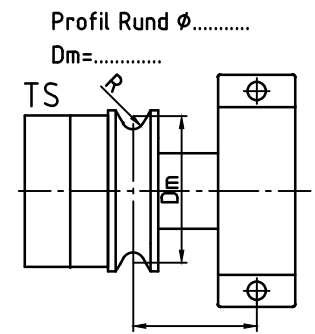
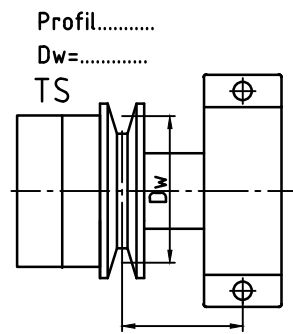
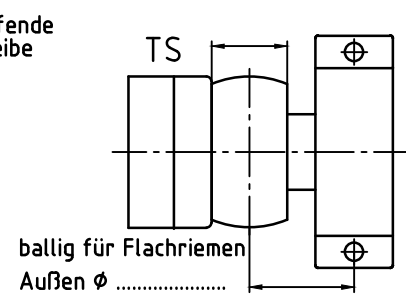
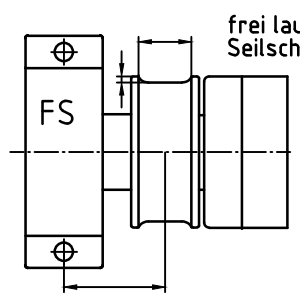



Type	WB	AB	LM	DB	C	C _{min}	D	d	a	b	c'	e	f	g	h	k	l	m	o	r	s	SW	Z
WS 90						55	90	40															
WS 100						55	100	50	150	180	20	64	140	62	154	141	120	55	129	120	14	17	20
WS 110						55	110	60															
WS 135						85	135	70	200	240	28	85	200	82	207	173	160	80	173	150	22	22	20
WS 150						100	150	80															
WS 160						100	160	85	250	300	35	100	200	92	232	202	200	80	200	180	27	22	25
WS 190						140	190	105															
WS 200						140	200	115															
WS 210						140	210	150	330	400	45	128	250	117	300	252	258	110	257	229	28	22	30
WS 240						140	240	150															
WS 275						140	275	170															

Walzenoberfläche.....

 Geschwindigkeit...V=.....
 Temperatur..... T=.....



Breitstreckwalze mit Stahlmantel	Zeich.Nr.	Angebot./Kom.Nr.	 Westring 29 D-33818 Leopoldshöhe Tel.05202-98280 Fax05202-982828 www.kickertf.de
	011/002		