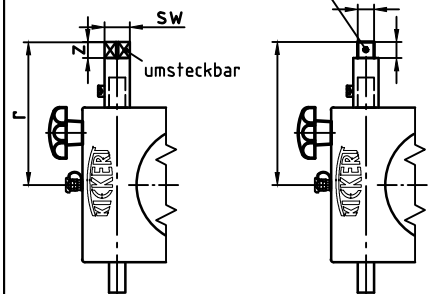


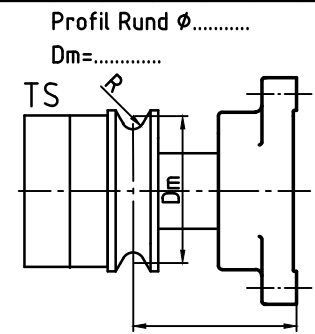
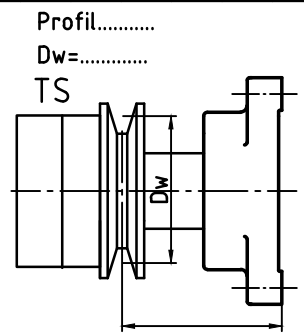
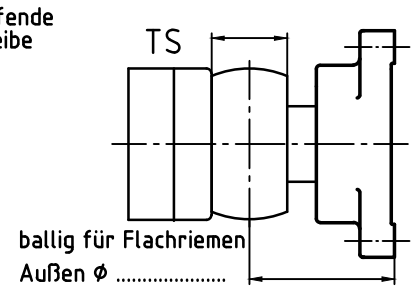
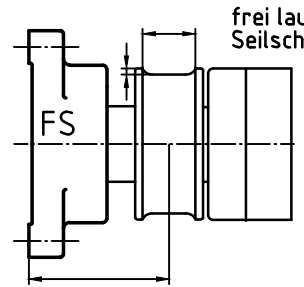
andere Zapfenausführungen nach Ihren Angaben




Type	WB	AB	GL	DB	C	C _{min}	D	d	a	b	c'	e	f	g	h	i	k	l	m	n	o	r	s	SW	Z
WS 90						85	90	40	150	180	35	60	140	62	150	50	141	120	62	30	125	120	14	17	20
WS 100					85	100	50																		
WS 110					85	110	60																		
WS 135						120	135	70	200	241	35	84	200	82	206	70	173	160	85	42	175	150	18	22	20
WS 150						160	150	80	250	290	35	100	200	92	232	80	200	200	90	45	200	180	27	22	25
WS 160					160	160	90																		
WS 190						200	190	105	300	350	45	125	250	117	292	120	248	258	112,5	60	250	229	27	22	30
WS 200					200	200	115																		
WS 210					200	210	150																		
WS 240						200	240	150																	
WS 275						200	275	170																	

Walzenoberfläche.....

 Geschwindigkeit V=..... m/min
 Temperatur T=..... °C



Breitstreckwalze mit Stahlmantel	Zeich.Nr.	Angebot./Kom.Nr.	 Westring 29 D-33818 Leopoldshöhe Tel.05202-98280 Fax05202-982828 www.kickertf.de
	021/002		